

Ball Metal Tread



Features

- Industry leading selection and overall value
- Fast deliveries for any order quantity
- Self-lubricating acetyl resin bearing
- No exposed axle

Applications

- Store Fixtures
- Furniture
- Office Equipment
- Medical Equipment

Options

- **Brake** 2-1/2" diameter models.
- **Tred-Gard®** cover protects tread from scratches during manufacturing and shipping. To order add [-T] to end of Part Number. Available for 2" and 2-1/2" models. For field installable Tred-Gards order **001391** for 2" and **001550** for 2-1/2" models.

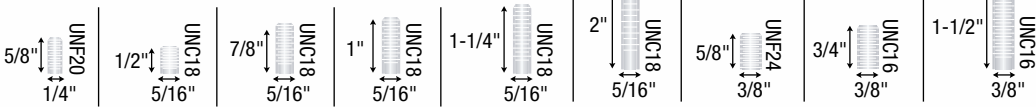


Wheel Diameter (Inches)	Mounting Height (Inches)	Swivel Radius (Inches)	Finish Type	Dynamic Load (Pounds)	Base Model # (Add fastening code)	Brake Model # (Add fastening code)	Fastening Selection*
1-1/2" Starlet	Thread/Plate: 1-13/16" Grip Ring/Grip Neck: 1-5/8"	1-3/16"	Bright Brass	40	PST15___BB		Threaded: 525 Grip Neck: 302 Plate: 1R
			Bright Chrome	40	PST15___BC		
			Windsor Antique	40	PST15___WA		
2" Satellite	Thread: 2-5/16" Grip Ring/Grip Neck: 2-3/16" Plate: 2-1/2"	1-1/2"	Bright Brass	75	PSE20___BB		Threaded: 507, 525, 605, 637, 639, 828 Grip Neck: 302 Grip Ring: 211, 222, 223 Plate: 101, 113
			Bright Chrome	75	PSE20___BC		
			Satin Chrome	75	PSE20___SC		
			Windsor Antique	75	PSE20___WA		
2-1/2" Planet	Thread: 2-13/16" Grip Ring/Grip Neck: 2-11/16" Plate: 3"	1-7/8" Brake: 2-5/16"	Bright Brass	100	PPL25___BB	PPL25___BB-B	Threaded: 512, 525, 526, 545, 605, 637, 639 Grip Neck: 302 Grip Ring: 211, 222, 223 Plate: 101, 113
			Bright Chrome	100	PPL25___BC	PPL25___BC-B	
			Satin Chrome	100	PPL25___SC	PPL25___SC-B	
			Windsor Antique	100	PPL25___WA	PPL25___WA-B	

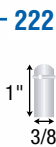
*To order, include blue fastener code in Base Model Number. Example: PST150525BB

Threaded Stem

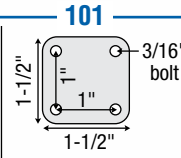
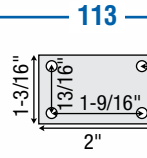
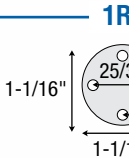
828 — 525 — 545 — 507 — 526 — 512 — 639 — 637 — 605



Grip Neck Grip Ring



Top Plate



Bright Chrome



Bright Brass



Windsor Antique



Satin Chrome



Note: Unfinished models available

Socket Options

Shepherd has many solutions to help you mount your casters to your equipment quickly and easily. See pages 56-57 for more information.

